

THIS DRAWING IS UNPUBLISHED. RELEASED FOR PUBLICATION  
 © COPYRIGHT BY TYCO ELECTRONICS CORPORATION. ALL RIGHTS RESERVED.

LOC	DIST	REVISIONS					
		P	LTR	DESCRIPTION	DATE	DWN	APVD
FT	0		K1	REVISED PER ECO-05-14533	11/23/05	SS	SRY

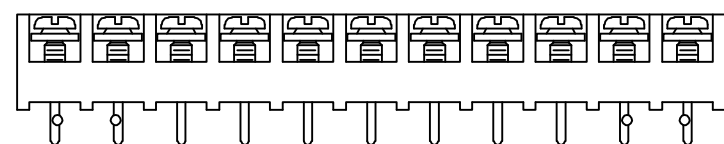
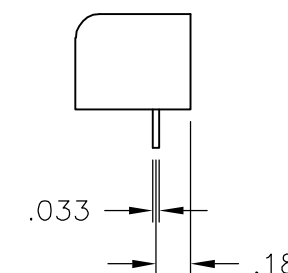
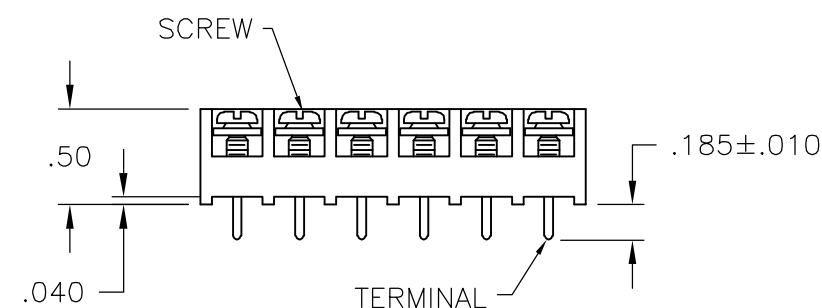
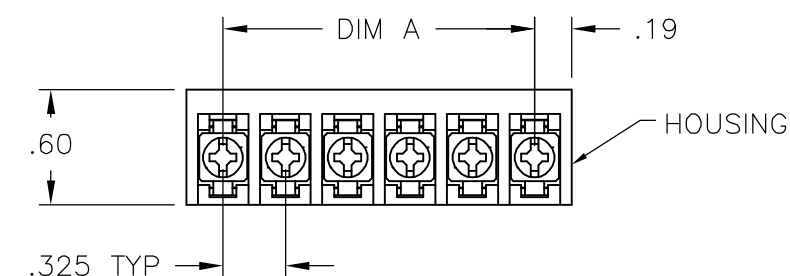
NOTES:

MATERIALS:  
 HOUSING: POLYAMIDE, UL94V-0  
 TERMINALS: COPPER ALLOY, TIN PLATED  
 SCREWS: STEEL, ZINC PLATED, EXCEPT WHERE NOTED.

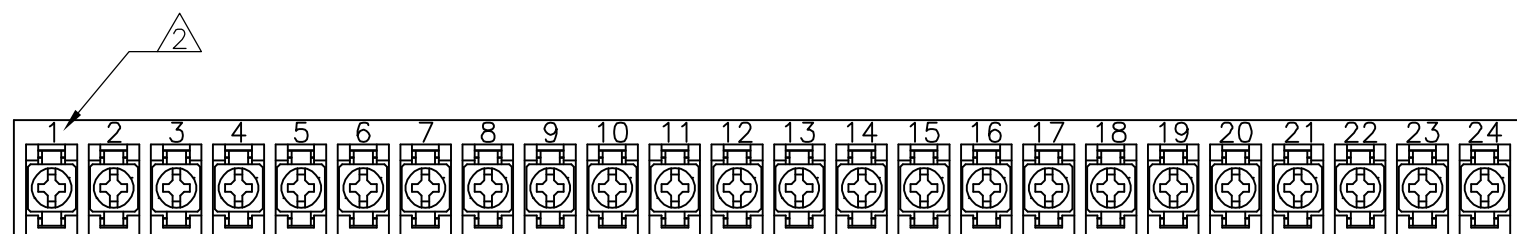
ELECTRICAL:  
 RATING: 20A, 150V(300V LIMITED RATING)  
 UL & CSA.

MECHANICAL:  
 WIRE RANGE: 14 AWG - 22 AWG  
 MAXIMUM TIGHTENING TORQUE: 7 IN-LBS.  
 RUNNING TORQUE: 0.5-3.5 IN-LBS, EXCEPT WHERE NOTED.

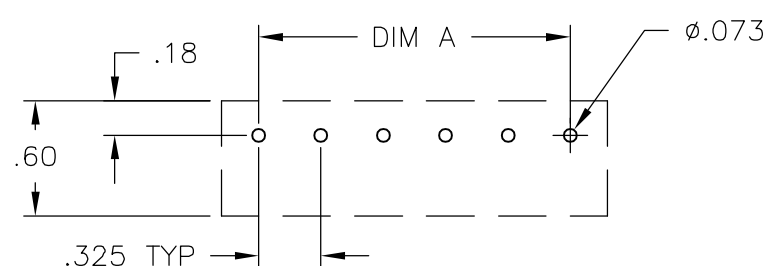
- ① SCREWS ARE BOTTOMED, NO RUNNING TORQUE.
- ② PERMANENT WHITE LETTERING.
- ③ SCREWS ARE NICKEL PLATED BRASS.
- ④ PRELIMINARY PART NUMBER.
- ⑤ PCB RETENTION FEATURE.



2-796607-1



4-1437649-0



RECOMMENDED HOLE LAYOUT  
 TOLERANCE ±.002, UNLESS OTHERWISE SPECIFIED

DIM. "A"	NO. OF POS.	CATALOG NUMBER	TYCO PART NO.
9.425	30	4PCV-30-006	1-1546158-3
9.100	29	4PCV-29-006	1-796607-5
8.775	28	4PCV-28-006	1-796607-4
8.450	27	4PCV-27-006	1-1546158-2
8.125	26	4PCV-26-006	1-796607-3
7.800	25	4PCV-25-006	1-1546158-1
7.475	24	4PCV-24-501	4-1437649-0
7.475	24	4PCV-24-006	3-1437649-9
7.150	23	4PCV-23-006	1-1546158-0
6.825	22	4PCV-22-006	3-1437649-6
6.500	21	4PCV-21-006	1-796607-2
6.175	20	4PCV-20-006	3-1437649-4
5.850	19	4PCV-19-006	1546158-9
5.525	18	4PCV-18-006	2-1437649-9
5.200	17	4PCV-17-006	2-1437649-7
4.875	16	4PCV-16-006	2-1437649-5
4.550	15	4PCV-15-006	1546158-6
4.225	14	4PCV-14-006	2-1437649-0
3.900	13	4PCV-13-006	1-1437649-7
3.575	12	4PCV-12-006	1-1437649-5
⑤④① 3.250	11	4PCV-11-525	2-796607-2
⑤④① 3.250	11	4PCV-11-524	2-796607-1
⑤④① 3.250	11	4PCV-11-006	1-1437649-2
① 2.925	10	4PCV-10-392	1546119-1
① 2.925	10	4PCV-10-006	1437649-5
③ 2.600	9	4PCV-09-006	1437649-1
③ 2.275	8	4PCV-08-495	9-1437648-7
③ 2.275	8	4PCV-08-006	9-1437648-1
③④ 1.950	7	4PCV-07-524	2-796607-0
③④ 1.950	7	4PCV-07-006	8-1437648-6
③④ 1.625	6	4PCV-06-523	1-796607-9
OBSOLETE 1.625	6	4PCV-06-513	796607-9
③① 1.625	6	4PCV-06-391	3-1437650-2
① 1.625	6	4PCV-06-006	8-1437648-0
① 1.300	5	4PCV-05-520	1-796607-6
③ 1.300	5	4PCV-05-397	796607-1
③ 1.300	5	4PCV-05-006	7-1437648-4
③④ .975	4	4PCV-04-522	1-796607-8
OBSOLETE .975	4	4PCV-04-512	796607-8
③④ .975	4	4PCV-04-006	6-1437648-7
③④ .650	3	4PCV-03-521	1-796607-7
① .650	3	4PCV-03-515	1-796607-1
① .650	3	4PCV-03-006	6-1437648-1
OBSOLETE .325	2	4PCV-02-514	1-796607-0
OBSOLETE .325	2	4PCV-02-511	796607-7
.325	2	4PCV-02-006	5-1437648-7

THIS DRAWING IS A CONTROLLED DOCUMENT.		DWN S SCHLEGEL 27JUN02	Tyco Electronics Corporation Harrisburg, PA 17105-3608	
DIMENSIONS: INCHES		CHK S. YODER 7/9/02		
TOLERANCES UNLESS OTHERWISE SPECIFIED:		APVD S. YODER 7/9/02	NAME 4PCV-XX-006 ASSEMBLY	
0 PLC ± - 1 PLC ± - 2 PLC ± - 3 PLC ± - 4 PLC ± - ANGLES ± - FINISH -		PRODUCT SPEC -	SIZE A2 CAGE CODE 00779 DRAWING NO C=5-1437648-7 RESTRICTED TO -	
MATERIAL -		APPLICATION SPEC -	SCALE NTS SHEET 1 of 1 REV K1	
		WEIGHT -	CUSTOMER DRAWING	